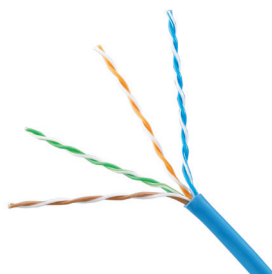


NetKey® Category 5e U/UTP Copper Cable

Category 5e cable meets ANSI/TIA-568-C.2 Category 5e and ISO 11801 2nd Edition Class D channel standards. The conductors are 24 AWG copper insulated with HDPE polymer. The copper conductors are twisted in pairs and all four pairs are covered by a low smoke zero halogen or flame retardant PVC (CM or CMR) jacket.



technical information

Electrical performance:	Certified performance in a 4-conductor configuration up to 100 meets ANSI/TIA-568-C.2 Category 5e and ISO 11801 2nd Edition Class D channel requirements
Conductor/insulator:	24 AWG solid copper insulated with HDPE polymer
Flame rating:	LSZH – IEC 60332-1, 60754-1, 60754-2, 61034-2, EN50575: Euroclass Eca PVC (CM) – UL 1685 EN 50575: Euroclass Eca PVC (CMR) – UL 1666
PoE compliance:	Meets IEEE 802.3af and IEEE 802.3at for PoE applications
Installation tension:	110N (25 lbf.) maximum
Temperature rating:	0° to 50°C (32° to 122°F) during installation -20° to 60°C (14° to 140°F) during operation
Cable jacket:	LSZH – Low Smoke Zero Halogen CM – PVC CMR – Flame retardant PVC
Cable diameter:	LSZH – 4.7mm (0.187 in.) nominal PVC (CM), PVC (CMR) – 4.6mm (0.184 in.) nominal
Cable weight:	LSZH – 9 kg/305m (20 lbs./1000 ft.) PVC (CM) – 8 kg/305m (18 lbs./1000 ft.) PVC (CMR) – 8.5 kg/305m (19 lbs./1000 ft.)
Packaging:	Packaging: 305m (1000 ft.) easy-pay-out box LSZH – 11 kg/305m (23 lbs./1000 ft.) PVC (CM) – 10 kg/305m (21 lbs./1000 ft.) PVC (CMR) – 10.5 kg/305m (22 lbs./1000 ft.) Packaged tested to ISTA procedure 1A

key features benefits

Third party tested	Cable has been tested as part of the NetKey® Category 5e UTP Copper Cabling System by an independent laboratory and complies with the electrical channel requirements of the following standard: ANSI/TIA-568-C.2 Category 5e standard
Descending length cable markings	Easy identification of remaining cable reduces installation time and cable scrap
Easy payout box	Ensures proper performance and provides quick installation

applications

Applications include:

- Ethernet 10BASE-T, 100BASE-T (Fast Ethernet), and 1000BASE-T (Gigabit Ethernet)
- 155 Mb/s ATM, 622 Mb/s ATM, 1.2 Gb/s ATM
- Token ring 4/16

www.panduit.com

PANDUIT®

DATA SHEET

NetKey® Network Components

NetKey® UTP Copper Cable

LSZH:	NUL5C04BU-C*
CM:	NUC5C04BU-C*
CMR:	NUR5C04BU-C

NetKey® Category 5e UTP Jack Module

Punchdown:	NKP5E88MIW**
Leadframe:	NK5E88MIWY**

NetKey® Category 5e UTP Patch Cords – CM

Foot lengths:	NK5EPC3^Y
Meter lengths:	NK5EPC1M^^Y

NetKey® Category 5e Punchdown Patch Panels

12-port:	NK5EPPG12WY
24-port, 1 RU:	NK5EPPG24Y
48-port, 2 RU:	NK5EPPG48Y

NetKey® Category 5e All Molded Punchdown Patch Panels

24-port, 1 RU:	NK5EPP24P
48-port, 2 RU:	NK5EPP48P

NetKey® Flush Mount Modular Patch Panels

Angled, 24-port, 1 RU:	NKPPA24FMY
Angled, 48-port, 2 RU:	NKPPA48FMY
Flat, 24-port, 1 RU:	NKPP24FMY
Flat, 48-port, 2 RU:	NKPP48FMY

NetKey® Category 5e All Molded Modular Patch Panels

24-port, 1 RU:	NKPP24P
48-port, 2 RU:	NKPP48P

Termination and Cable Prep Tools

JackRapid™ Termination Tool:	JR-PAN-2
Conductor snipping tool:	CWST
Conductor stripping tool:	CJAST

*For standard cable colors other than BU (Blue), replace BU in part number with WH (White) or IG (International Gray). Contact customer service for region availability. Standard pallets are configured in 4 layers, 9 cartons per layer, total of 36 cartons per pallet. Add E to end of part number for European pallets which are configured in 4 layers, 6 cartons per layer, total of 24 cartons per pallet.

**For standard colors other than Off White (IW), replace suffix with EI (Electrical Ivory), IG (International Gray), WH (White), BL (Black), BU (Blue), RD (Red), YL (Yellow), GR (Green) or VL (Violet). Add -Q to end of part number for 25 pack convenience package.

^For standard foot lengths other than 3 feet, replace the 3 in the part number with 5, 7, 10 14 or 20. For standard colors other than Off White, add suffix BU (Blue), RD (Red), YL (Yellow) or GR (Green) before the Y at the end of the part number. For example, the part number for a blue, Category 5e 5-foot patch cord is NK5EPC5BUY.

^^For standard meter lengths other than 1 meter, replace the 1 in the part number with 2, 3, 4 or 5. For standard colors other than Off White, add suffix BU (Blue), RD (Red), YL (Yellow) or GR (Green) before Y at the end of the part number. For example, the part number for a blue, Category 5e, 5-meter patch cord is NK5EPC5MBUY.

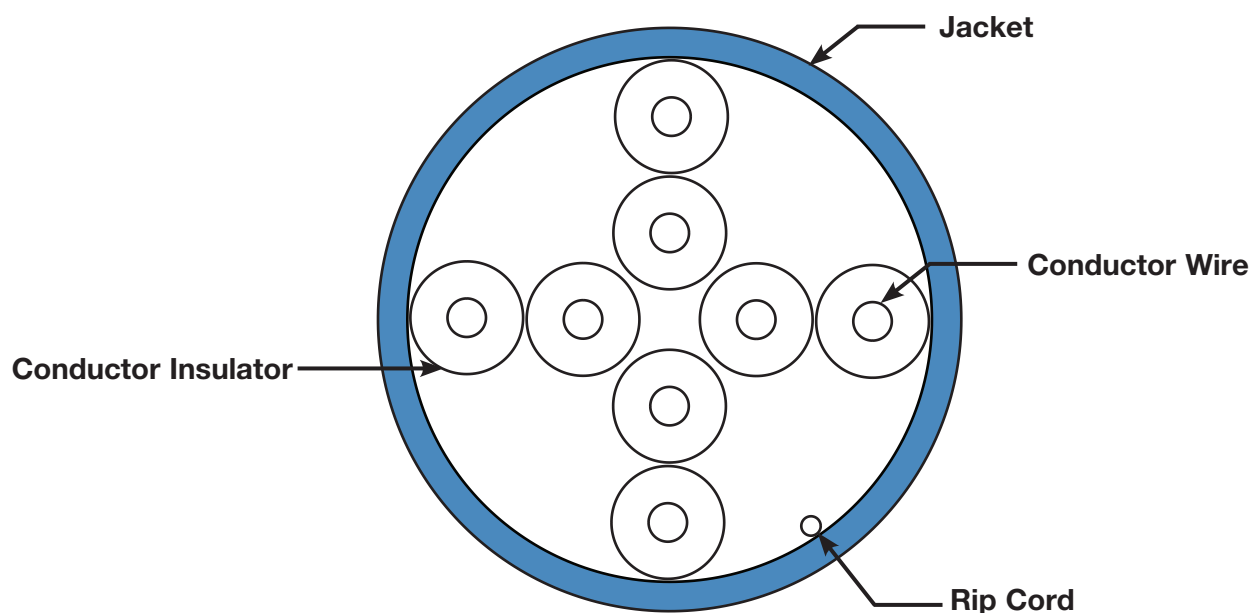
Fluke JackRapid- Termination Tool available through distribution. To locate the local office, visit www.flukenetworks.com/contact. JackRapid- is a trademark of Fluke Networks.

NetKey® Category 5e U/UTP Copper Cable

additional specifications

Mechanical Test	
Ultimate Breaking Strength	>400 N (90 lbf.)
Minimum Bend Radius	4 x cable diameter
Electrical Test	
Nominal Velocity of Propagation (NVP)	65%

cable construction



WORLDWIDE SUBSIDIARIES AND SALES OFFICES

PANDUIT US/CANADA
Phone: 800.777.3300

PANDUIT EUROPE LTD.
London, UK
cs-emea@panduit.com
Phone: 44.20.8601.7200

PANDUIT SINGAPORE PTE. LTD.
Republic of Singapore
cs-ap@panduit.com
Phone: 65.6305.7575

PANDUIT JAPAN
Tokyo, Japan
cs-japan@panduit.com
Phone: 81.3.6863.6000

PANDUIT LATIN AMERICA
Guadalajara, Mexico
cs-la@panduit.com
Phone: 52.33.3777.6000

PANDUIT AUSTRALIA PTY. LTD.
Victoria, Australia
cs-aus@panduit.com
Phone: 61.3.9794.9020

For a copy of Panduit product warranties, log on to www.panduit.com/warranty

For more information

Visit us at www.panduit.com

Contact Customer Service by email: cs@panduit.com
or by phone: 800.777.3300

PANDUIT®

©2017 Panduit Corp.
ALL RIGHTS RESERVED.
NKDS30--WW-ENG
6/2017